

# IMPORTANT SAFETY AND INSTALLATION INSTRUCTIONS

**WARNING:** Risk of fire and electrical shock. This product is to be installed by a qualified electrician only.

**CAUTION:** When using electrical equipment, basic safety precautions should always be followed including the following: Read all instructions carefully before installation and save

for future use. Make sure installation and all connections are in accordance with National Electrical Code and any local regulations. To avoid possible electrical shock, be sure that power supply is turned off before installing or servicing this fixture. Servicing should be performed by qualified service personnel.

These instructions do not claim to cover all details or variations. When additional information is desired, please contact your SPI representative.

## BOWL TO ARM INSTALLATION (BOTTOM MOUNT TYPE)

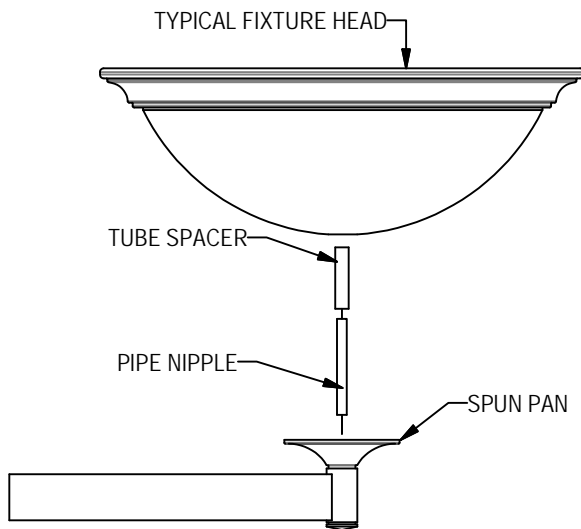


Figure # 1

1. Thread pipe nipple over wires and into font at end of each arm. See fig. # 1 & 2
2. Slide Spun Pan and tube spacer over pipe nipple & wires. See fig. # 1 & 2
3. Adjust pipe nipple height as needed. (Allow for  $\pm 3/4"$  of pipe nipple to be above the tube spacer). See fig. # 2
4. On fixture head, open access panel on top and remove (2) screws from splice box cover. Remove splice box cover. See fig. # 3.
5. Slide fixture head assembly over pipe nipple & spacer. See fig. # 1 & 3
6. Secure fixture head to arm by tightening provided nut & lock washer to top of pipe nipple. Rotate fixture head in a clockwise direction until fixture head is tight and hinged side of access panel is closest to stem. See fig. # 3.
7. Make appropriate connections in splice box.
8. Secure splice box cover with screws. and shut access panel.
9. See additional installation instructions for Canopy and Fixture Installation.

Note: 6F39/1F22 lamping shown  
Trim Style, Lamp Configuration  
and bowl type may vary.

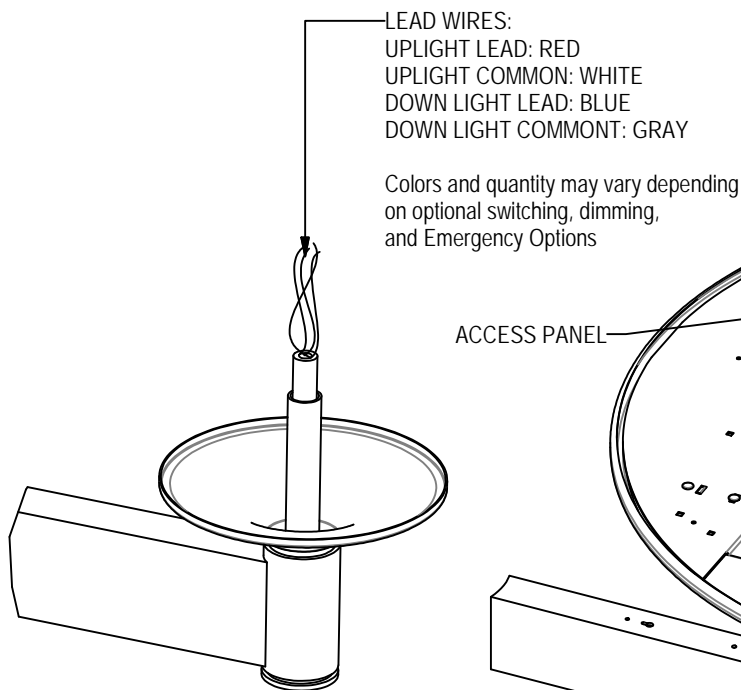


Figure # 2

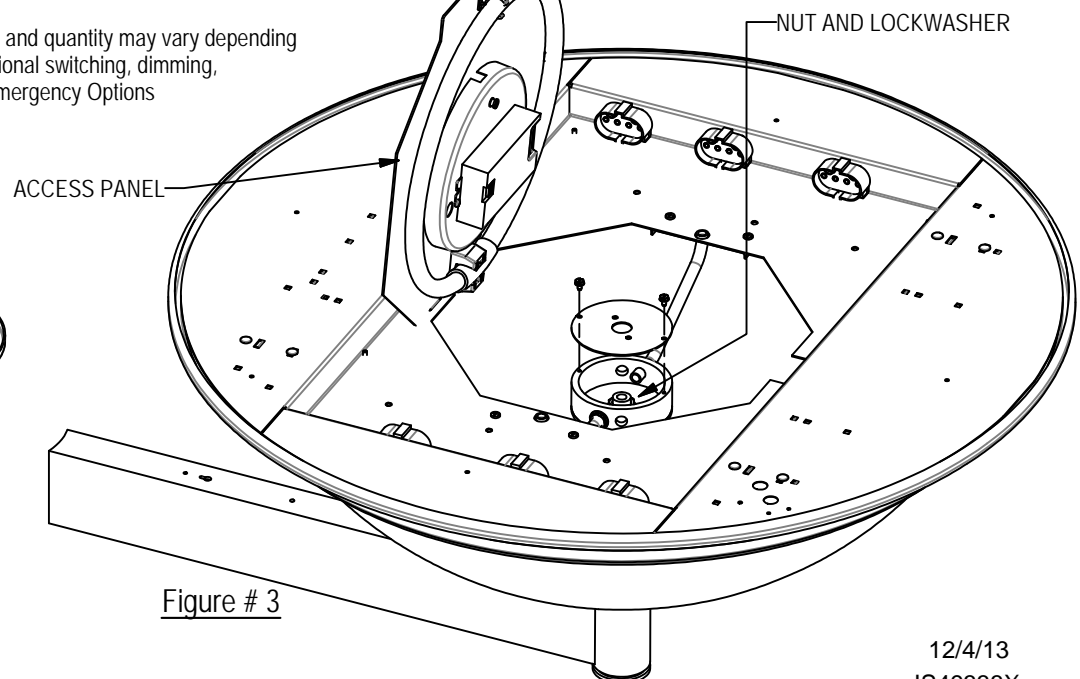


Figure # 3

12/4/13  
IS49333X